

AIRPOWER® P6 HIGH

Art. No. 206201



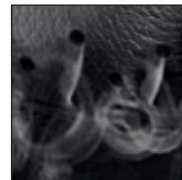
CE EN ISO 20347:2012 O2 HRO HI CI WR FO SRC

Leather/textile combination, waterproof and extremely breathable with GORE-TEX® Extended, leg height 18,5 cm, antistatic, sole 014

Available sizes UK 3 ½ – 12, Extra large sizes UK 12 ½ – 14



206201



HAIX® Climate System



High quality materials



Heel bend



Upper Material

A combination of soft and supple waterproof leather, hydrophobic, breathable (5,0 mg/cm²/h), 2.0 – 2.2 mm thick and nylon fabric

Inner Lining

GORE-TEX® Extended; 3-layer GORE-TEX® laminate, waterproof and highly breathable. Abrasion-resistant lining with optimized climate comfort, especially for flexible alternating inside and outside use.

Non-woven insole

Non-woven insole absorbs moisture

Foot bed

Anatomically formed, exchangeable, washable, very good moisture absorption, dries quickly

Sole

Rubber/PU sole with a sporty street/terrain tread. Optimal step and bend behaviour due to sporty toe and heel rounding. The low-weight PU, impact-absorbing wedge ensures outstanding walking characteristics. Oil and gasoline resistant, non-marking. Compliant with EN ISO 20347:2012

HAIX® Climate System

The HAIX® Climate system uses the pumping movement, which permits air circulation with every step – warm air is released and fresh air comes in through the vent holes at the top of the boot.

HAIX® AS System

The HAIX® Arch Support System supports the natural curvature of the foot. Toes and joints have thereby sufficiently more space. Keeps foot in the best position for optimal foot health.

Sun Reflect

Reduces the heating effect of the upper leather by direct sunlight. Sunlight is reflected by the leather, keeping the leather and the feet cooler

Others

Light weight, leather reinforcement in toe and heel areas, additional leather reinforcement on both sides of the arch which extends below the edge of the sole

UK	3	3 ½	4	4 ½	5	5 ½	6	6 ½	7	7 ½	8	8 ½	9	9 ½	10	10 ½	11	11 ½	12	12 ½	13	13 ½	14	14 ½	15
EU	35	36	37	37	38	39	39	40	41	41	42	43	43	44	45	45	46	47	47	48	48	49	50	50	51
US	4	4 ½	5	5 ½	6	6 ½	7	7 ½	8	8 ½	9	9 ½	10	10 ½	11	11 ½	12	12 ½	13	13 ½	14	14 ½	15	15 ½	16