

CONNEXIS® SAFETY+ GTX

Art. No. 631013
mid / grey-yellow

CE EN ISO 20345:2011 S3 HRO HI CI WR SRC

Colour: grey-yellow, velour leather/textile, waterproof and extremely breathable with GORE-TEX® Extended, shaft height 14 cm, antistatic, ESD, sole 031

Available sizes UK 6 – 12



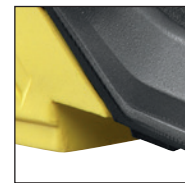
631013



HAIX® Nano-Carbon
Toe Cap



CONNEXIS System



Higher heel front for
better support



Upper Material

velour leather/textile combination.
laetherthick 2,0 mm -2,2 mm

Inner lining

GORE-TEX® Extended; waterproof and highly breathable. Abrasion-resistant lining with optimized climate comfort, especially for flexible alternating inside and outside use.

Sole

Extremely high slip resistance with simultaneous low wear due to special rubber and innovative sole construction. Slats, specially bevelled and round sole elements offer optimum grip as well as high agility and stable grip on smooth and wet surfaces. The PU damping wedge with its low weight ensures excellent running properties. Very good insulation against cold, fuel-oil resistant and not chalking. In conformity with EN ISO 20345:2011.

Durable sole

Rubber compound for long life.

Insert

Comfortable, damping and moisture wicking. Separate heel cup ensures good foot guidance. „AIRFLOW“ channels. „Perfect-Fit“ marking for optimal check of the correct shoe size.

HAIX® Anti Slip

Very good adhesion on different terrain due to the profile design and the special rubber used.

ESD

Electrostatically conductive shoes tested according to DIN EN 61340-4-3:2016 and DIN EN ISO 61340-5-1:2016.

HAIX® CONNEXIS® System

Special tape that specifically stimulates the fasciae in the foot and thus has an anti-fatigue effect on the entire musculo-skeletal system.

HAIX® Nano-Carbon Toe Cap

The Nano-Carbon protective cap is ultralight, meets the highest safety requirements and offers extra space for the toes.

HAIX® Absorption

Damping with damping wedge integrated into the sole.

HAIX® Protective sole

Metal-free HAIX® protective throughsole protects against the penetration of sharp objects.

HAIX® Vario Wide Fit System

With 3 different insoles, the width of the shoe can be individually adjusted. The red inlay (medium) is supplied with the shoe. A yellow insole (wide) and blue (narrow) can be ordered separately.

HAIX® Climate System

The HAIX® Climate system uses the pumping movement, which permits air circulation with every step – warm air is released through the Micro-Dry lining/vent holes at the top of the boot.

Other

Tightening loop, antistatic and metal-free

UK	3	3½	4	4½	5	5½	6	6½	7	7½	8	8½	9	9½	10	10½	11	11½	12	12½	13	13½	14	14½	15
EU	35	36	37	37	38	39	39	40	41	41	42	43	43	44	45	45	46	47	47	48	48	49	50	50	51
US	4	4½	5	5½	6	6½	7	7½	8	8½	9	9½	10	10½	11	11½	12	12½	13	13½	14	14½	15	15½	16

HAIX®-Schuhe, Produktions- und Vertriebs GmbH

Auhofstrasse 10, 84048 Mainburg, Germany
T. +49(0)8751/8625-0, F. +49(0)8751/8625-25
info@haix.de, www.haix.com